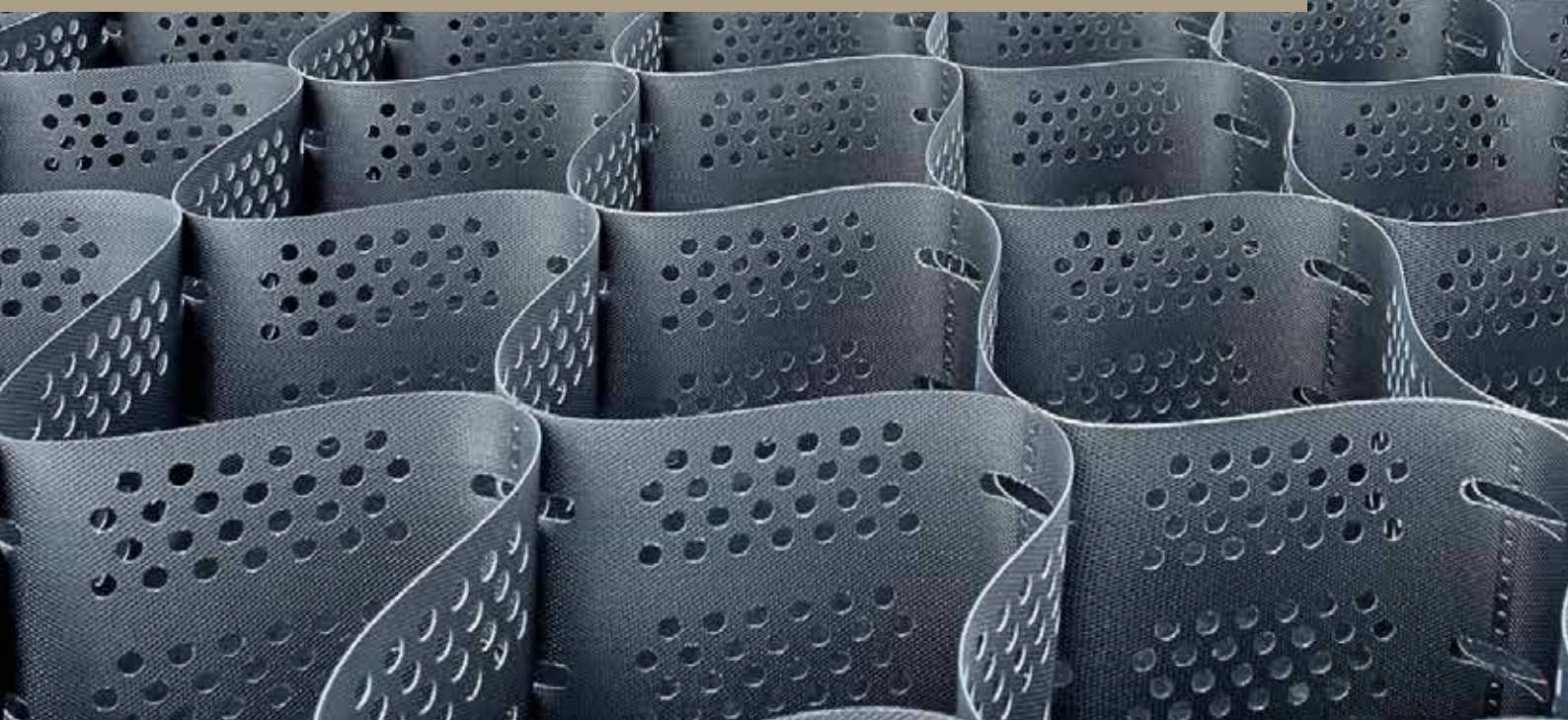




GEO PRODUCTS

INTEGRATED GEOSYNTHETIC SOLUTIONS

SINCE 1990



WWW.GEOPRODUCTS.ORG

12626 N. Houston Rosslyn Rd.

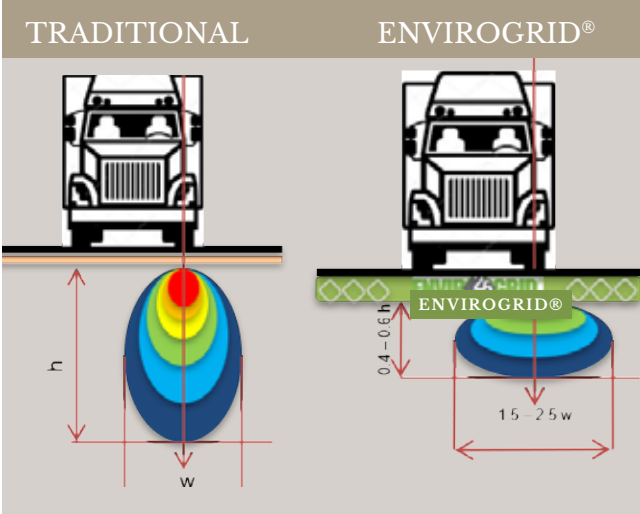
Houston, Texas 77086

281-820-5493

HOW ENVIROGRID® WORKS

CELLULAR CONFINEMENT SYSTEM

Developed in the late 1970's by the U.S. Army Corps of Engineers, EnviroGrid® is a three-dimensional panel designed to confine and strengthen infill material for use in heavy civil construction applications.



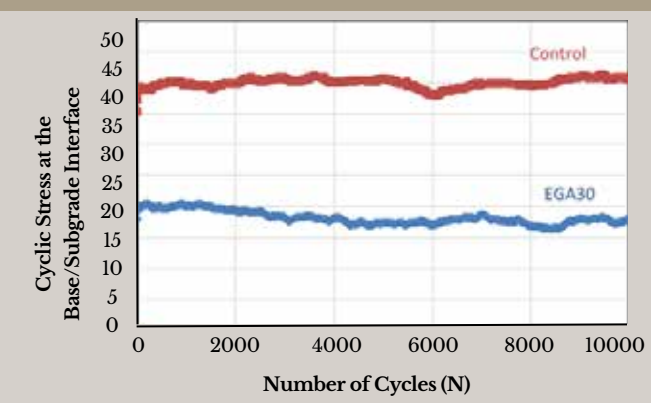
SOLVING INDUSTRY CHALLENGES

THE ENVIROGRID® SOLUTION

EnviroGrid® significantly reduces sub-base pressure by creating a mattress layer between the sub-base and the rolling course.

This allows for the use of local infill material and reduces the amount of material needed, minimizing project and maintenance costs while increasing foundation stability.

TEST DATA OF PRESSURE AT SUB-BASE
LOADED SEMI-TRUCK & TRAILER



INTERNAL CAPABILITIES

DESIGN SUPPORT & CERTIFICATIONS

Project specific technical resources are available for each application designed with EnviroGrid®. Geo Products manufactures EnviroGrid® in the United States under stringent quality control standards, and is an active member of multiple industry organizations and platforms.

- Specific CAD Drawings
- Custom Specifications / Cross Sections
- Design Calculators
- Installation Support



YOU ONLY BUILD ONCE;
BUILD IT RIGHT WITH ENVIROGRID®

Learn more about cellular confinement technology by scanning to QR code to view our video.





BASE STABILIZATION

The expanded panels act as a large mat, distributing applied loads over an extended area. The three-dimensional cells increase strength and stiffness of the infill, which boosts their weight-bearing capabilities and allows for the use of permeable aggregates.



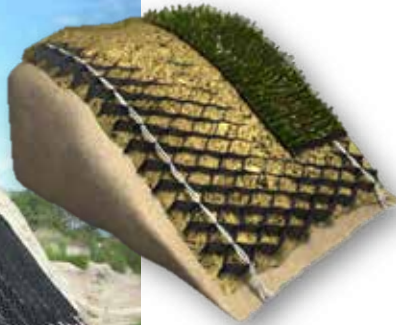
CHANNEL PROTECTION

EnviroGrid® is successful at protecting channels by counteracting various flow velocities. It can be laid directly on the slope and properly anchored. Based on the channel characteristics, EnviroGrid® can be filled with angular rock, vegetated soil, or concrete. Geo Products offers the needed anchoring for the system's integrity.



SLOPE EROSION CONTROL

EnviroGrid® placed on slopes will hold infill material in place. The cell walls slow the flow of water down the slope or in areas affected by wave action, reducing the formation of rills, a major cause of soil erosion. Depending on the site specific application, EnviroGrid® can be filled with angular rock, concrete or native soils.



RETAINING WALLS

In very steep slope applications, soils can be retained with a vertical wall structure. Filled with local soils, EnviroGrid® can be used in both cut and fill situations by holding the soil in place and providing drainage throughout the structure. The outer cells are able to be vegetated, providing an aesthetically pleasing look.

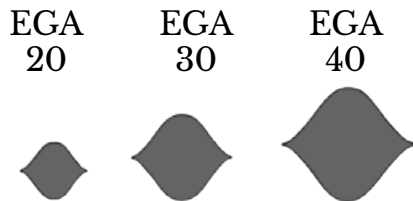




ENVIROGRID® GEOCELL PRODUCT DETAILS

Geo Products manufactures EnviroGrid® Geocell in the standard product codes and cell heights below. To minimize shipping costs, EnviroGrid® panels are collapsed and packaged on pallets.

CELL APERTURES

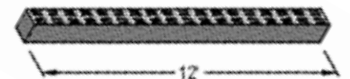


CELL HEIGHTS

3" 4" 6" 8"



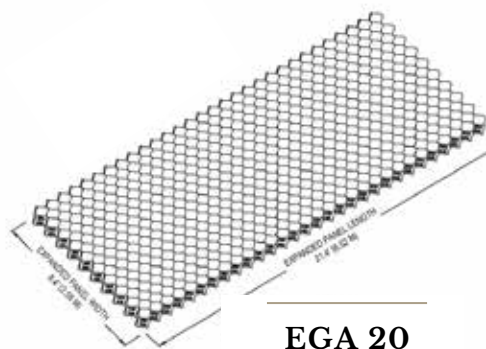
ENVIROGRID® COLLAPSED PANEL



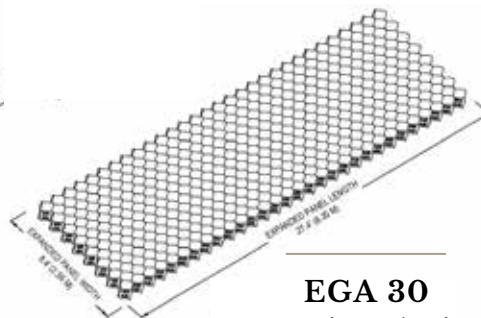
*Above are the typical cell dimensions that are offered. Custom cell heights can be manufactured for specific projects.

EXPANDED PANELS

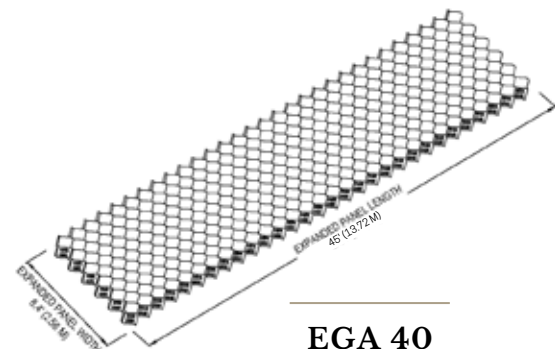
EnviroGrid® product codes result in the following expanded panel dimensions.



EGA 20
8.4' x 21.4'
180SF



EGA 30
8.4' X 27.4'
230SF



EGA 40
8.4' X 45'
378SF



WWW.GEOPRODUCTS.ORG

For full product specifications and technical information, please visit our website.